



SFERE TRITTICO

design **Simone Micheli**

PATENTED

 **5 YEARS WARRANTY**

MATERIAL:

Super slim heating body in painted carbon steel.

FIXING KIT:

Brackets, airvent, hexagonal tool, plugs and screws for mounting suitable for use on compact or hollow brick, installation notice.

The fixing kit is compliant with VDI 6036 norm, class 4.

VALVE KIT INCLUDES (SOLO PER VERSIONE STANDARD):

Valves with thermostatic head
Fittings for copper pipe (Ø 12/14/15)
Fittings for multilayer pipe (Ø 16 x2)
Ready- to install pipe connection kit

PACKAGING:

The radiator is protected by a film in polyethylene and with a carton box. Use and maintenance notice included.

PAINTING PROCESS:

Painted with ecological epoxy. (Certificate DIN 55900-1,-2). Thermal outputs certified in accredited laboratories in compliance with European norm EN442.

COLOURS:

Radiators and accessories: standard white R01 colour. For other colours see colour chart.

FOR WALL-FIT VERSION THE VALVES MUST BE PURCHASED SEPARATELY.

PRODUCT CERTIFICATES



P. max: 5 bar

T. max: 110° C

Available for central heating systems

Connections: n° 2 x G 1/2" - n° 1 x G 1/2"

AWARD



ACCESSORIES

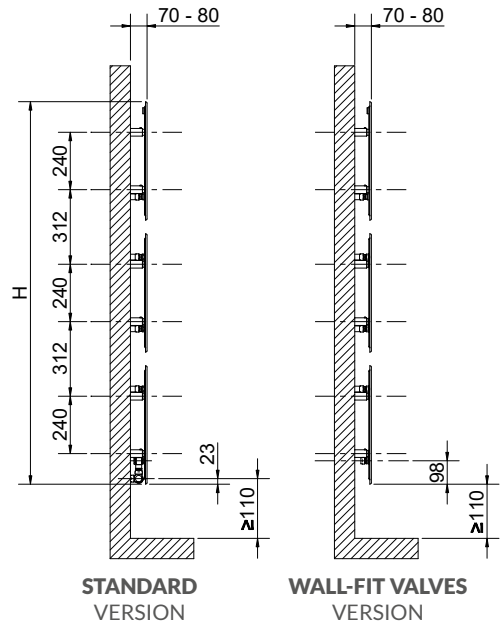
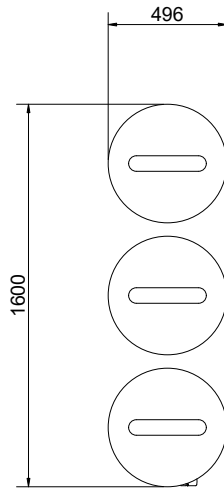
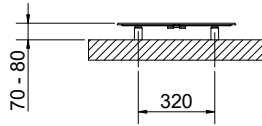
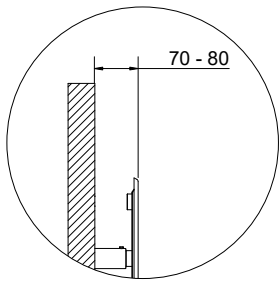
Manual wall-fit valves



WALL-FIT VALVES
Art. Nr. 5991990311226

Fitting for wall-fit valves
Copper connection Ø 12/14/15
Art. Nr. 5991170300001

Fitting for wall-fit valves
Multilayer connection Ø 16 x2
Art. Nr. 5991170300002

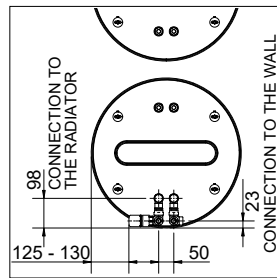


BUILT-IN CONNECTIONS FOR SFERE TRITTICO



TUTORIAL
INSTALLING
THE CONNECTION KIT

Version with PIPE CENTRES 50 mm



SFERE TRITTICO COMPLETE WITH WALL-FIT HYDRAULIC CONNECTION

Art. Nr.	Diameter D [mm]	Pipe Centres I [mm]	A [mm]	Dry Weight [Kg]	Surface [m ²]	Water Content [lt]	Thermal output Watt		Exponent n
							$\Delta t = 50^{\circ}\text{C}$	$\Delta t = 30^{\circ}\text{C}$	
STANDARD VERSION 3540806100221	496	50	24	24,3	1,2	0,9	582	316	1,195
VERSION FOR WALL-FIT VALVES 3540806100226	496	50	93	24,3	1,2	0,9	582	316	1,195

Art. Nr. are referred to white R01 colour- version.

The art. nr. of the standard version, is inclusive of **VALVE, HOLDER AND THERMOSTATIC HEAD**, compliant with UNI EN215:2007 and DM 19/02/2017.

The art. nr. of the wall fit version includes only **2 X 1/2" CONNECTIONS**; valves to be ordered separately.

SFERE TRITTICO WITHOUT WALL-FIT HYDRAULIC CONNECTION

Art. Nr.	Diameter D [mm]	Pipe Centres I [mm]	A [mm]	Dry Weight [Kg]	Surface [m ²]	Water Content [lt]	Thermal output Watt		Exponent n
							$\Delta t = 50^{\circ}\text{C}$	$\Delta t = 30^{\circ}\text{C}$	
STANDARD VERSION 3540806100227	496	50	24	24,3	1,2	0,9	582	316	1,195
VERSION FOR WALL-FIT VALVES 3540806100228	496	50	93	24,3	1,2	0,9	582	316	1,195

Art. Nr. are referred to white R01 colour- version.

The art. nr. of the standard version, is inclusive of **VALVE, HOLDER AND THERMOSTATIC HEAD**, compliant with UNI EN215:2007 and DM 19/02/2017.

The art. nr. of the wall fit version includes only **2 X 1/2" CONNECTIONS**; valves to be ordered separately.

WITH BUILT-IN CONNECTIONS

Art. Nr.

5102001100001

For output at different Δt than 50°C , please refer to the following formula = desired output = output at $\Delta t 50^{\circ}\text{C}$ x (desired $\Delta t/50$)ⁿ



SFERE

design **Simone Micheli**

PATENTED

 **5 YEARS WARRANTY**

MATERIAL:

Super slim heating body in painted carbon steel.

FIXING KIT:

Brackets, airvent, hexagonal tool, plugs and screws for mounting suitable for use on compact or hollow brick, installation notice.

The fixing kit is compliant with VDI 6036 norm, class 4.

VALVE KIT INCLUDES (SOLO PER VERSIONE STANDARD):

Kit valvola e detentore

Fittings for copper pipe (Ø 12/14/15)

Fittings for multilayer pipe (Ø 16 x2)

PACKAGING:

The radiator is protected by a film in polyethylene and with a carton box. Use and maintenance notice included.

PAINTING PROCESS:

Painted with ecological epoxy. (Certificate DIN 55900-1,-2).

Thermal outputs certified in accredited laboratories in compliance with European norm EN442.

COLOURS:

Radiators and accessories: standard white R01 colour.

For other colours see colour chart.

FOR WALL-FIT VERSION THE VALVES MUST BE PURCHASED SEPARATELY

PRODUCT CERTIFICATES



P. max: 5 bar

T. max: 110° C

Available for central heating systems

Connections: n° 2 x G 1/2" - n° 1 x G 1/2"

AWARD



SFERE WITH WALL-FIT VALVES

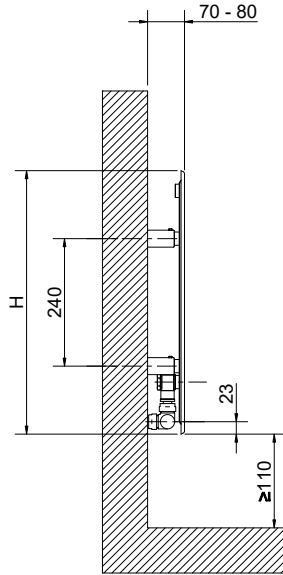
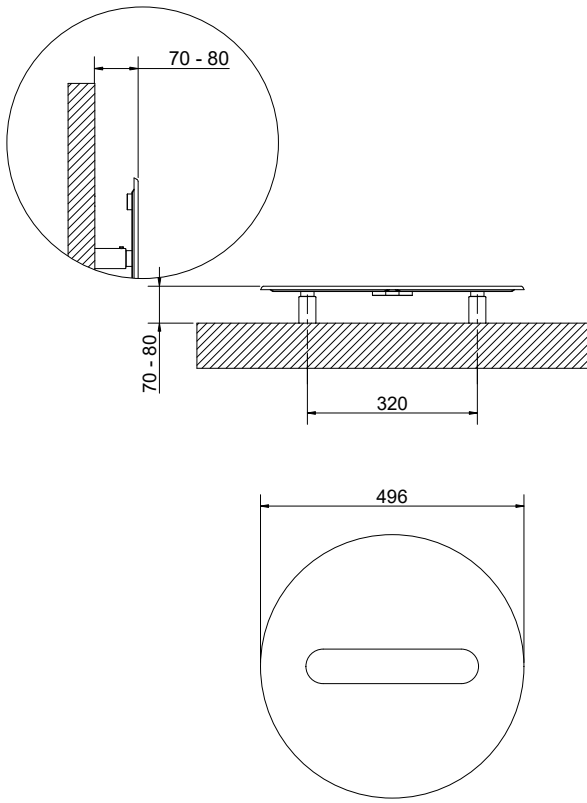


Wall-fit valves (OPTIONAL)

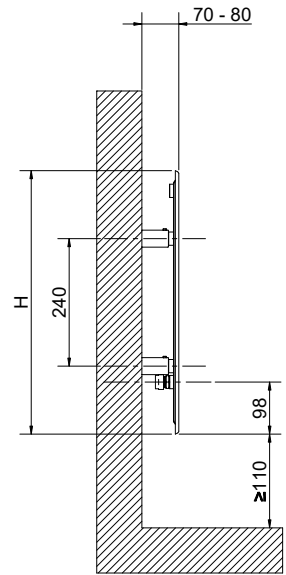


ACCESSORIES

Manual wall-fit valves	
	WALL-FIT VALVES Art. Nr. 5991990311226
	Fitting for wall-fit valves Copper connection Ø 12/14/15 Art. Nr. 5991170300001
	Fitting for wall-fit valves Multilayer connection Ø 16 x2 Art. Nr. 5991170300002

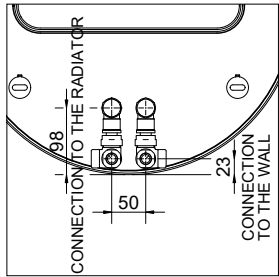


STANDARD
VERSION



WALL-FIT VALVES
VERSION

Version with PIPE CENTRES 50 mm



SFERE

Art. Nr.	Diameter	Pipe Centres	A	Dry Weight	Surface	Water Content	Thermal output Watt		Exponent n
							$\Delta t = 50^{\circ}\text{C}$	$\Delta t = 30^{\circ}\text{C}$	
STANDARD VERSION 3540806100211	496	50	24	8,1	0,35	0,3	194	105	1,1950
VERSION FOR WALL-FIT VALVES 3540806100212	496	50	24	8,1	0,35	0,3	194	105	1,1950

Art. Nr. are referred to white R01 colour- version.

The art. nr. of the standard version is inclusive of **VALVE AND HOLDER**.

The art. nr. of the wall fit version includes only **2 X 1/2" CONNECTIONS**- valves to be ordered separately.

For output at different Δt than 50°C , please refer to the following formula = desired output = output at $\Delta t 50^{\circ}\text{C}$ x (desired $\Delta t/50$)ⁿ